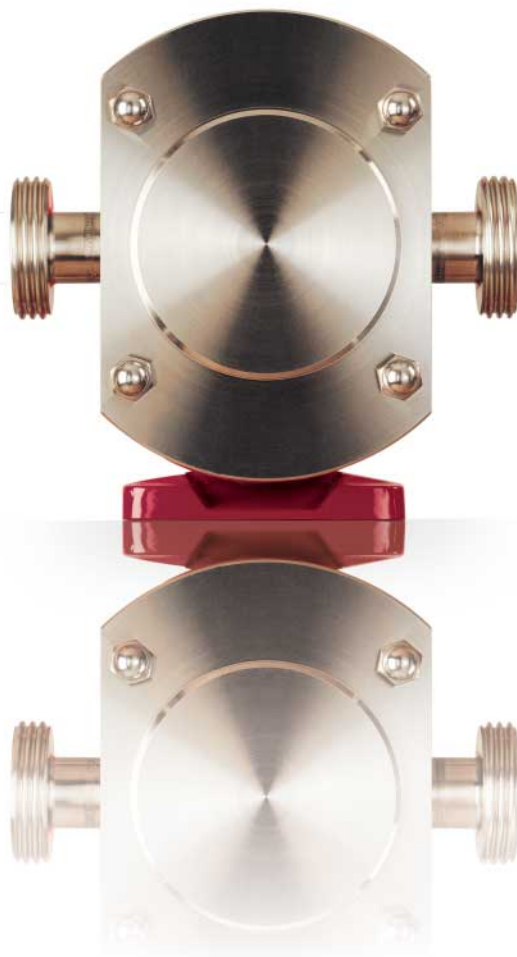




**Rotary Lobe Pumps**

***Right first time, every time.***

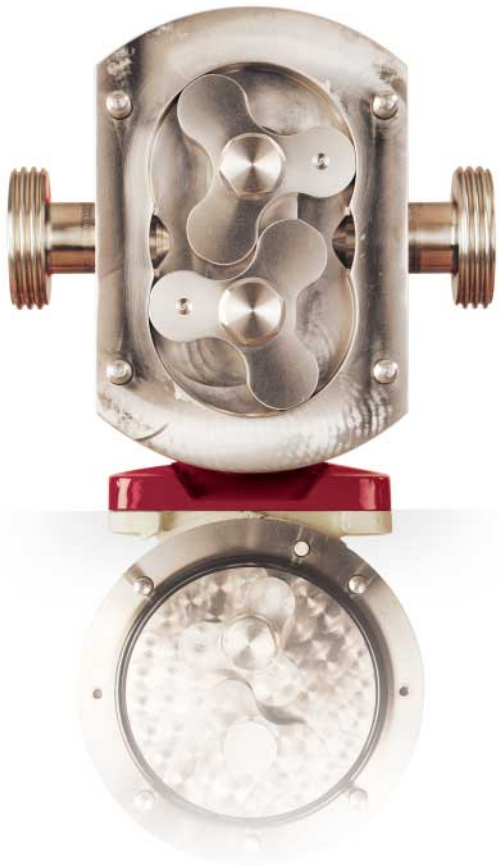


What you want from a pump is really quite simple: that it should perform dependably to specification, year after year, with minimum maintenance. The right pump is the one you can virtually forget about once it's installed.

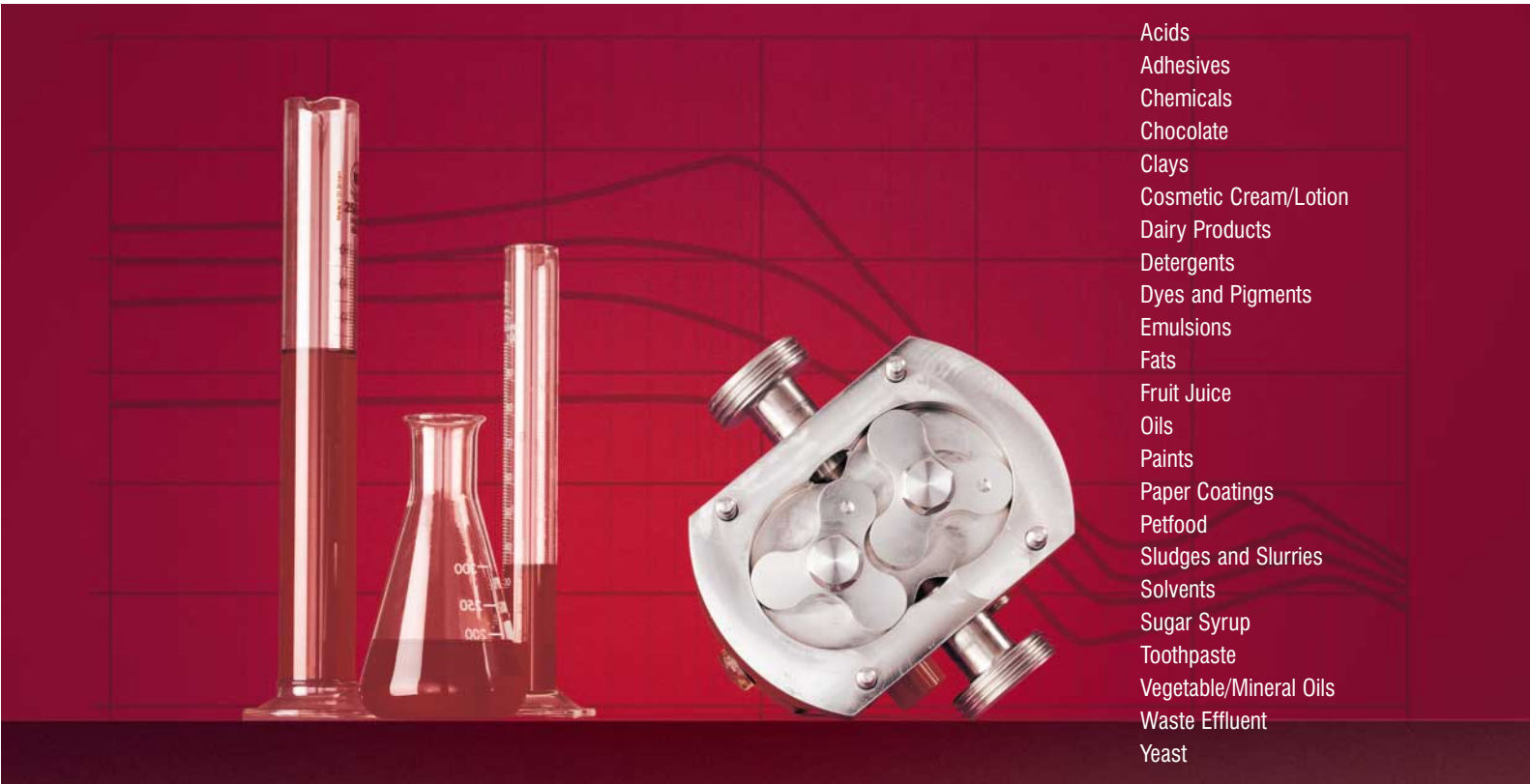
So it pays to choose carefully - especially as a pump's operational importance is out of all proportion to the investment involved.

If you're specifying rotary lobe pumps, that really means choosing the SSP brand. SSP is unique in combining 50 years of practical application experience with the financial, research and high-end manufacturing resources of a world class engineering organisation.

However large or small your application, whatever you're pumping and whatever the requirements and regulatory framework of your industry sector, the chances are we've been there before. So we can give you the benefit of what we've already learned. So you always get the right pump, whether it's an off the shelf product or a specifically engineered solution.



50 years  
of practical  
application  
experience



#### Rotary Lobe Pump know how

No one knows the technology better.

As the world's leading dedicated rotary lobe pump manufacturer, our expertise in this specialist field is unrivalled. We trace our roots right back to the originators of the technology, which we've been progressively refining and developing ever since.

SSP Pumps is a brand of Alfa Laval Pumps Ltd., part of the global Alfa Laval group known throughout the world for its uncompromised manufacturing excellence and exemplary customer service.

It is this vast breadth and depth of knowledge and experience that we place at your disposal when it comes to the critical task of selecting the right pump for your requirement.

#### Application experience

When you approach SSP Pumps for advice, you get access to the largest accumulation of processing expertise and application know-how in the world.

From the moment you make an initial enquiry, you enter a world of sophisticated support systems designed to ensure that your requirements are met in full.

The first step in specifying the right pump and seal is to understand the rheological properties of the pumped media, together with any changes that may occur under pumping conditions.

This is where our LobeSelect pump selection and configuration tool comes in. With a liquids database compiled from years of our own rheology lab tests, this state-of-the-art software is one of the most comprehensive of its type in the world, detailing the properties of everything from effluent to yoghurt.

As the only rotary lobe pump manufacturer in Europe with its own rheology laboratory, SSP is uniquely equipped to gather this data, even in the unlikely event that your application is one we've never come across before. Our rheology lab is equipped to conduct viscosity and material compatibility tests and to determine other material factors such as specific gravity, solids content and abrasiveness.

Whether this information is already in the database or has to be specially determined in the laboratory, LobeSelect automatically translates these parameters into a detailed specification which it then matches to the pump best suited to the duty.



## Reliability

We deliver reliability through exceptional quality.

Where other manufacturers just hope for long-term reliability, ours is a matter of record. We recently discovered a pump from the first batch we ever manufactured, still working faultlessly with virtually no maintenance after nearly half a century. When we say SSP pumps are dependable, we mean dependable - and we can prove it.

The pump gearbox is the first stage in this process, where accuracy is paramount to achieve the vitally important pumphead geometry. This built-in accuracy ensures correct alignment and synchronisation of the high precision tri-lobe rotors that provide optimum pump efficiency and performance. It also enables rotor replacement and installation of different rotor profiles without modification.

In compliance with international standards, SSP Pumps are designed with a space between the pumphead and the gearbox. This enables a wider choice of sealing arrangements and minimises the possibility of cross contamination. More importantly this design provides the facility to detect leakage.

Our manufacturing capability is based on the very latest CNC machine tools, supported by advanced 3D modelling and DNC links. All key components are manufactured in-house, and the few specialist external suppliers work with us on a real "partnership" basis to ensure that our rigorous quality standards are consistently maintained.

These standards are implemented by a highly skilled, strongly motivated workforce. The quality systems we operate are to ISO 9001:1994 and we are in the process of accreditation to ISO 9001:2000. These internationally recognised standards are supported by 100% finished goods inspection and testing and our own programme of continuous improvement.

## Comprehensive range

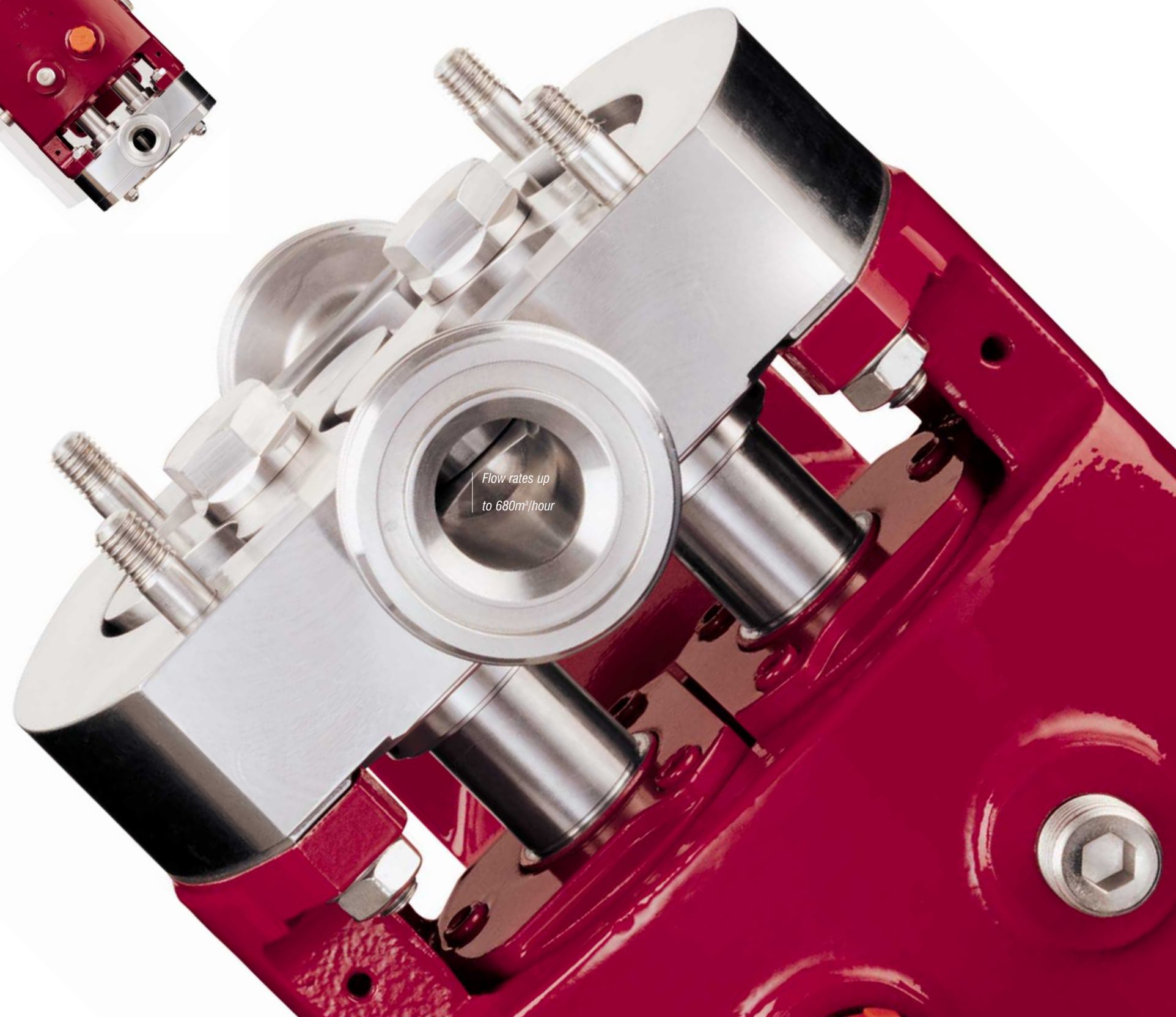
SSP Pumps offers one of the broadest ranges of rotary lobe pumps available anywhere, for flow rates up to 680m<sup>3</sup>/h and differential pressures up to 20 bar.

The portfolio comprises the stainless steel Series S, X and N, together with ductile iron Series D pumps, and the engineered to order Series A and G rotary lobe pumps. With port sizes from 1/4 in (6 mm) to 12 in (300 mm) this line-up of rotary lobe pumps is one of the most comprehensive on the market today, providing the optimum solution for a wide variety of applications.

All SSP products share the impeccable engineering integrity on which our reputation is built. As an Alfa Laval European centre of excellence, our 12,000m<sup>2</sup> production facility in Eastbourne has had the benefit of massive investment in the latest manufacturing technologies to ensure that all our products are engineered to the highest world standards.



*The latest precision CNC machine tools provide an unparalleled level of accuracy.*



Flow rates up  
to 680m<sup>3</sup>/hour



## Global excellence

A world leader in precision engineering and manufacture, Alfa Laval operates to the highest world standards of product integrity and support.

Alfa Laval provides access to levels of investment and development resources beyond the reach of any independent pump manufacturer. SSP Pumps benefits from the transfer of advanced research and manufacturing technologies between members of the group.

Everything we do is geared to realising our mission: to deliver solutions that help you optimise the performance of your processes, time and time again.

## Customer focus

For our customers, our total service concept guarantees optimum performance from initial selection through to the availability of spare parts and dependably efficient maintenance and repair.

Choose the SSP brand and you'll be dealing with a company that's wholly focussed on your operational requirements and always responsive to your needs after the purchase as well as before. We listen hard, and we don't stop listening.

Because our products could easily last a generation, we're interested in building long term relationships with our customers. If you grow, we grow - so we do everything in our power to keep you ahead of the game.

## Right first time. Every time.

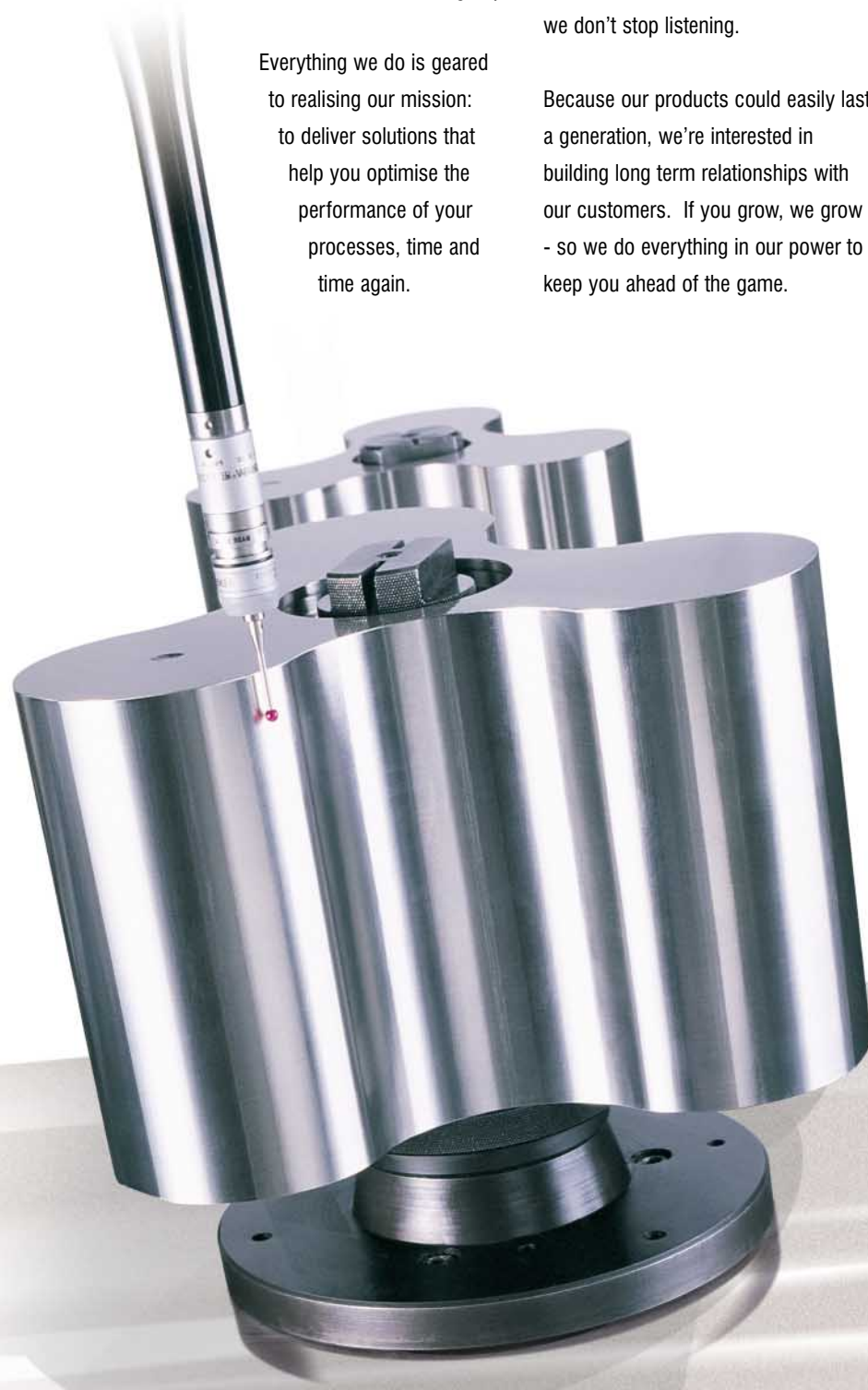
Ultimately, that's the advantage of choosing the SSP brand.

You get highly engineered solutions, custom made or off the shelf, and the support of a worldwide network of expert specialist distributors.

You get one of the most comprehensive ranges in the business, built on 50 years of expertise in rotary lobe pump manufacture for every conceivable application. And it's backed by massive investment in excellence of product and service, with the financial and technical support of a world class group.

Whatever it is you need to pump, wherever you are in the world, choose SSP and you'll have the confidence that it will be right first time. Every time.

*engineered to the highest  
world standards*





Represented By:

**KGO Group Ltd.**  
[www.kgogroup.com](http://www.kgogroup.com)

1200 Speers Rd., #52  
Oakville, ON  
Canada L6L 2X4

Tel. (905)847-1544 Fax. (905)847-1699 Email. [info@kgogroup.com](mailto:info@kgogroup.com)

B/100/0211

