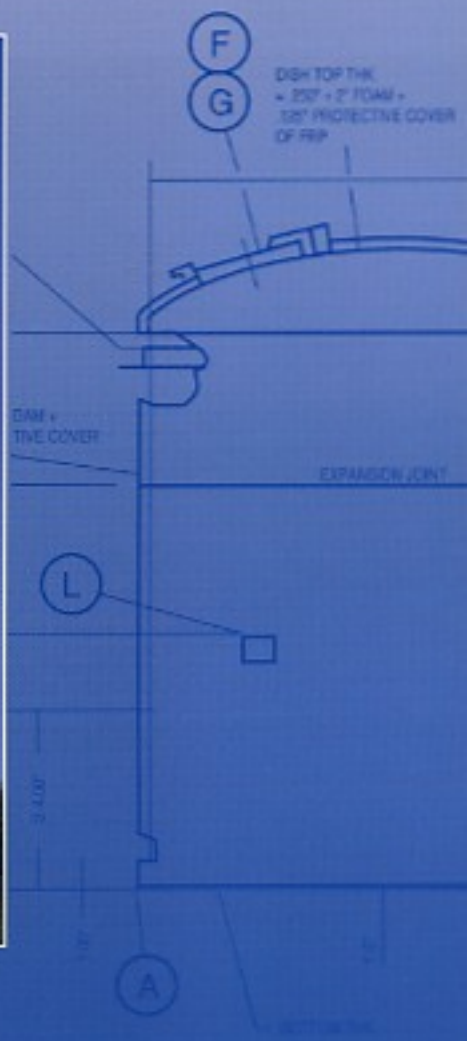




ANSI/ISO/ASQ Q9001-2000  
REGISTERED

# Plas-Tanks

INDUSTRIES, INC.



BLUEPRINTED PROOF FOR:

# FRP TANKS

ENGINEERED BETTER  
FULL THREE YEAR WARRANTY



WHAT MAKES THE DIFFERENCE?

# PRECISION DESIGN,

Established in 1976 as a supplier to the chemical industry, metalworking and manufacturers of all types, Plas-Tanks developed engineering and manufacturing expertise for a wide variety of process and storage vessels including those used in the specialized areas of food, air purification and wastewater treatment.

A measure of Plas-Tanks' success is its amount of repeat business. The combination of a modern manufacturing facility, opened in late 1995 and a staff of highly trained engineers and technical specialists dedicated to solving customer problems has guaranteed the company's continued growth.



## THE PLAS-TANKS' PROMISE OF QUALITY

Most companies intend to make a quality product but fail to assure it, becoming sidetracked and focusing instead on profits, service or product development.

We focus on one thing - conformance to customer requirements. In fact, Plas-Tanks' definition of quality is: Conformance to Requirements. Think about it.

If you tell someone exactly what you want and they deliver, didn't you get the quality you expected at the agreed price?

*Plas-Tanks does more:*

- We warrant your product for three full years from the date of completion.
- We impose standards upon our raw material suppliers who submit test results or certifications of compliance.
- We subject our quality management system to internal audit and to external assessment against international standards on a regular basis.
- We have our system certified to ISO 9001 every three years.

Plas-Tanks' people understand that quality is not a sometimes thing nor something that just happens; it is the result of careful planning, diligent efforts and attention to detail.

I'm proud of our accomplishments in the quality arena and invite you to send us your requirements and requests for quote. You will not be disappointed.



*J Kent Covey*  
Kent Covey  
President



# WITH TESTED QUALITY

## THE REINFORCED PLASTIC ADVANTAGES OFFER UNLIMITED FLEXIBILITY

Plas-Tanks engineers to your specifications. We never try to adapt your needs to our tank. Our engineers use state of the art computer generated design calculations and drawings. Our thorough

knowledge of materials science and structural dynamics means the tank you buy is the best for your application with the most cost effective options available. Some of the important Plas-Tanks differences include:

- Seamless design and extra reinforcements in the knuckle area, which assure tank bottom integrity during cycling.
- Intersperse applied in the filament winding portion of the tank for greater axial strength.
- 360° support on the tank bottom of suspended tanks to eliminate stress concentrations. In aggressive chemical environments, such as strong acids or alkalis, corrosion-resistant composite tanks from Plas-

Tanks protect your contents, and guard against contamination.

There are no seams to weld and the lighter weight means you use lighter, less costly lifting equipment. Maintenance is minimized because durable RTP won't rust or corrode. Exterior painting is not required and for cleaning, periodic washing with plain water is all that's needed.

Two of our Special Products are Bryneer™ and Plasta-Therm®. Bryneer™ is a down flow brine maker which is specifically designed to meet the requirements of the Food, Pharmaceutical and Water Softening Industries. For technical information on salt brine making technology and the Bryneer™, please write for Bulletin 1781.

Plasta-Therm® is a thermal retention system for use in freeze protection or when temperature control is critical to a process. Plasta-Therm® offers you ultimate protection with maximum efficiency. For more information, write for Bulletin 1578.



### FILAMENT WINDING

Precise construction in multiple sizes are easily executed with our filament wound technology.



### CONTACT MOLDING

Resins and reinforcements are carefully selected to assure the maximum service life at the least possible cost.



### INSPECTION

Inspections are performed throughout the fabrication process to ensure that every Plas-Tanks' tank meets the customer's quality standards.



**Plas-Tanks**  
INDUSTRIES, INC.



WHAT MAKES THE DIFFERENCE?

# QUALITY CONSTRUCTION

## TANK SHAPES

Plas-Tanks offers shop built cylindrical vessels in a range of diameters from 1' to 15' with unlimited height.

The chart on pages 5 and 6 lists the most common configurations of filament wound tanks available on a standard basis. All tanks are provided with lifting devices. Tanks 6 feet in diameter and larger are equipped with steel tie-down lugs.

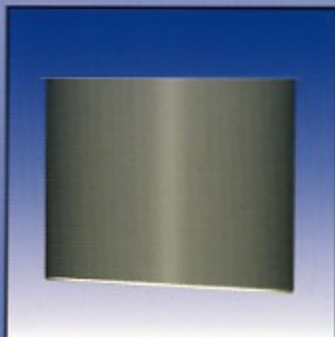
Any combination of these general tank shapes and styles can be produced by Plas-Tanks. They can be fabricated to your specifications or to ASTM, ASME or AWWA standards assuring flexibility to satisfy each customer. Remember, custom fabrication is a Plas-Tanks specialty.



**Plas-Tanks**  
INDUSTRIES, INC.



Integral flat top, flat bottom, a completely enclosed unitized RTP tank for vertical installation.



Integral flat bottom with optional bolt-on cover and sloped bottom. A versatile style RTP tank, the optional bolt on cover allows for easy entry or inspection and the sloped bottom for easy drainage.



Dished top, flat bottom. An RTP tank having as standard a top hinged manway. An available option is a "liquid level indicator strip."



Dished top, and bottom, with elevated steel mounting support. An RTP tank designed for installation above ground supported around the entire circumference with 3 or more legs for tie down.



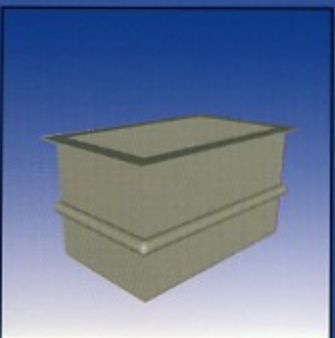
Integral flat top, dished bottom. Unitized RTP tank designed for above ground suspension atop an optional 4-legged base or FRP skirt.



Open top, conical bottom. Center-drain for easy drainage of fluids or fluids containing solids. Options include bolt-on-cover, mounting lugs, support stand or skirt.



Horizontal tank, with dished-ends. RTP tank for installation either above grade on saddles or below grade.



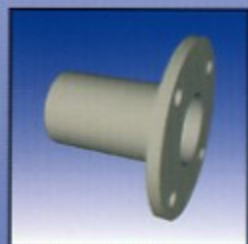
Rectangular Tanks. An RTP structurally-reinforced tank with low based drainage and open top available with a bolt-on-cover.



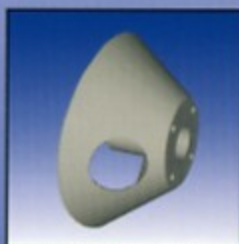
Duct work, hoods and stacks available in a wide variety of types and sizes. Designed for operations involving the handling of corrosive fumes.



# CTION & FLEXIBILITY



Flanged Nozzle



Conically Gusseted  
Flanged Nozzle

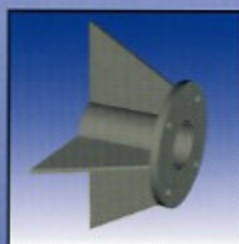
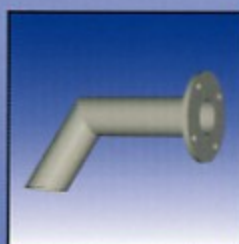


Plate Gusseted  
Flanged Nozzle



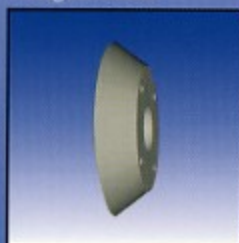
Flanged Nozzle Siphon  
Drain



Flanged Nozzle  
Full Drain



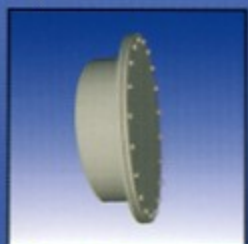
Double Flanged Nozzle



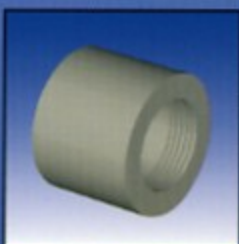
Flanged Pad



Hinged Manway



Flanged Manway



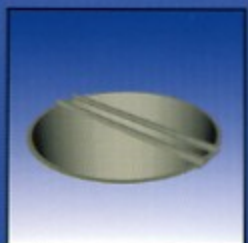
NPT Fitting



Plate Baffle



Wedge Baffle



Agitator Support



Ladder and Safety  
Cage



Flanged Dip Pipe



Goose Neck Vent



V Vent



Clear Sight Glass

## ACCESSORIES

Plas-Tanks offers a full line of hand lay-up nozzles, internal baffles, pipe supports, coil supports, agitator supports, dip pipes, ladders, lifting devices and tie down lugs. All manways are furnished with neoprene gaskets and zinc plated nuts, bolts, and washers (other types of gasketing, bolts, nuts, and washers are available as special items). Standard nozzles are offered with plate or conical gussets. Tie-down lugs are available in zinc plated steel, stainless steel, or RTP encapsulated steel.

Baffles are optional in either flat plate or wedge type. In addition, a choice of gooseneck or "V" vents is offered. A translucent liquid level indicator strip, with optional numerical calibrations can be applied to the tank shell. Shop applied polyurethane foam insulation in standard two-pound density is available in multiples of one inch layers to meet heat loss requirements.

Bolt-on covers are optional for all open-top tanks. Exterior protective coatings are available in a wide range of custom colors. For tanks with an exterior color coating a clear PVC sight glass is available.





OP THK.  
2" FOAM  
PROTECTIVE

WHAT MAKES THE DIFFERENCE?

# UNLIMITED SIZES AND WEIGHTS

SHELL HEIGHT			D I A M E T E R S									
4'			5'		6'		7'		8'		9'	
4'	376 gal	155 lbs	587 gal	198 lbs	846 gal	293 lbs	1151 gal	354 lbs	1503 gal	435 lbs	1902 gal	591 lbs
5'	470	174	734	259	1057	385	1439	442	1879	497	2378	669
6'	564	206	881	286	1268	426	1726	464	2255	559	2854	747
7'	658	217	1028	313	1480	467	2014	511	2631	613	3330	818
8'	752	228	1174	353	1692	529	2302	558	3006	667	3806	889
9'	846	306	1321	380	1904	570	2589	635	3382	752	4282	1005
10'	939	317	1468	407	2116	611	2877	682	3758	860	4758	1076
11'	1033	337	1615	434	2328	652	3165	729	4134	914	5234	1147
12'	1128	359	1762	507	2540	715	3453	776	4510	999	5710	1218
13'	1223	380	1909	534	2752	756	3740	911	4886	1053	6186	1334
14'	1316	405	2056	561	2964	797	4028	958	5262	1107	6662	1405
15'	1410	429	2203	597	3176	838	4316	1005	5638	1161	7138	1476
16'	1504	455	2350	633	3388	898	4603	1081	6014	1246	7614	1547
17'	1598	482	2497	671	3600	939	4891	1128	6390	1300	8090	1682
18'	1692	511	2644	711	3812	980	5179	1175	6766	1354	8566	1753
19'	1786	542	2791	754	4024	1021	5467	1222	7142	1408	9042	1824
20'	1880	575	2937	799	4236	1084	5754	1300	7518	1494	9518	1895

The capacities and weights listed were calculated based on tanks located indoors in seismic zone 1 with the fluid being stored or processed having a specific gravity of 1.

The sizes listed are the most common configurations available - Plas-Tanks will fabricate any size required, via field fabrication or field assembly of shop-built sections, as appropriate.

Tanks are available in sizes ranging from 1' to 15' diameter shop fabricated and 16' to 35' diameter shop fabricated and field assembled. Tanks larger than 35' diameter are fabricated on site.

For capacities and weights not listed contact your local Plas-Tanks representative or call one of our factory sales engineers.

Note: Because of DOT regulations 15' diameter tanks cannot be shipped to some areas.



**Plas-Tanks**  
INDUSTRIES, INC.





DISH TOP TANK

E COVER

SHELL HEIGHT		D I A M E T E R S									
	10'	11'	12'	13'	14'	15'					
4'	2349 gal 680 lbs	2842 gal 877 lbs	3383 gal 898 lbs	3971 gal 925 lbs	4606 gal 955 lbs	5287 gal 987 lbs					
5'	2936 773	3552 1016	4228 1098	4964 1131	5758 1167	6609 1207					
6'	3523 866	4263 1134	5074 1219	5957 1256	6910 1296	7931 1340					
7'	4110 957	4973 1207	5919 1316	6950 1355	8062 1398	9253 1446					
8'	4698 1048	5684 1305	6765 1520	7943 1567	9214 1617	10575 1672					
9'	5286 1258	6394 1460	7610 1605	8936 1653	10366 1706	11897 1764					
10'	5874 1349	7105 1569	8456 1691	9928 1742	11518 1798	13219 1859					
11'	6462 1440	7816 1678	9301 1787	10921 1841	12670 1900	14541 1965					
12'	7050 1561	8526 1776	10147 1992	11914 2052	13822 2118	15863 2190					
13'	7638 1652	9237 1931	10992 2077	12907 2139	14974 2207	17185 2282					
14'	8226 1743	9947 2040	11838 2162	13900 2227	16126 2298	18507 2372					
15'	8814 1834	10658 2149	12683 2258	14893 2326	17278 2400	19829 2482					
16'	9402 1965	11368 2248	13529 2464	15885 2538	18430 2619	21151 2708					
17'	9990 2056	12079 2401	14375 2549	16878 2625	19582 2709	22473 2801					
18'	10578 2147	12789 2510	15220 2634	17871 2713	20734 2800	23795 2895					
19'	11166 2238	13500 2619	16066 2728	18864 2810	21886 2900	25117 2999					
20'	11754 2359	14210 2719	16911 2935	19857 3023	23038 3120	26439 3226					
21'	12342 2450	14921 2874	17757 3021	20850 3112	24190 3212	27761 3321					
22'	12930 2541	15631 2983	18602 3106	21843 3199	25342 3301	29083 3413					
23'	13518 2632	16342 3092	19448 3201	22836 3297	26494 3403	30405 3519					
24'	14106 2954	17052 3191	20293 3407	23829 3509	27646 3621	31727 3744					
25'	14694 3045	17763 3345	21139 3590	24822 3698	28798 3816	33049 3946					
26'	15282 3136	18473 3495	21984 3699	25815 3810	29950 3932	34371 4066					
27'	15870 3257	19184 3578	22830 3808	26808 3922	31102 4048	35693 4186					
28'	16458 3348	19893 3663	23675 3952	27801 4071	32254 4201	37015 4344					
29'	17046 3439	20605 3879	24521 4061	28794 4183	33406 4317	38337 4464					
30'	17634 3530	21315 3964	25367 4170	29787 4295	34558 4432	39659 4583					

## D I S H B O T T O M T A N K C A P A C I T Y A D D E R

TANK DIAMETER	4'	5'	6'	7'	8'	9'	10'	11'	12'	13'	14'	15'
CAPACITY	37 GAL.	73 GAL.	127 GAL.	203 GAL.	308 GAL.	439 GAL.	604 GAL.	813 GAL.	1026 GAL.	1350 GAL.	1690 GAL.	2020 GAL.

## H O R I Z O N T A L D I S H C A P A C I T Y A D D E R

TANK DIAMETER	4'	5'	6'	7'	8'	9'	10'	11'	12'	13'	14'	15'
CAPACITY	75 GAL.	146 GAL.	254 GAL.	406 GAL.	616 GAL.	878 GAL.	1208 GAL.	1626 GAL.	2052 GAL.	2700 GAL.	3380 GAL.	4040 GAL.



WHAT MAKES THE DIFFERENCE?

# PLAS-TANKS MAKES THE DIFFERENCE



New 27,000 sq. ft. facility is said to be the most modern in North America.

As one of the leading fabricators of Reinforced Thermosetting Plastic Products we recognized our need to grow. This new facility will allow us to meet the continuous growth in the RTP markets into the next century.

The modern facility, commitment to our customers and quality implementation through ISO 9001 certification will ensure our continued success.



**Plas-Tanks**  
INDUSTRIES, INC.

39 Standen Drive  
Hamilton, Ohio 45015  
Tel. 513-942-3800  
Fax 513-942-3993

[www.plastanks.com](http://www.plastanks.com)

BRY-4/2003