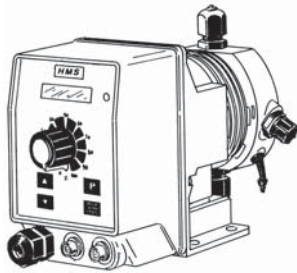
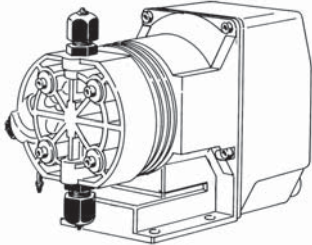


"HMS DIGITAL" series Metering Pumps

Data Sheet

Configuration Info



115 VAC Metering pumps, except 2001, 1802 and 0706 capacities.

MODELS		
	<i>self venting models</i>	
MF	AF	"MF" Digital multifunction pump (Constant, Divide, Multiply, PPM, Batch, Volt, mA), stand-by and flow sensor input, alarm output, level control.
DC	AD	"DC" Digital constant pump, stand-by input alarm output, level control.
ML	MA	"CL" Proportional pump for free chlorine control with level control, supplied without chlorine probe. It operates with chlorine cells mod. ECL1 and ECL6/7/12, not provided.
EN	AN	"EN" Pump with weekly timer, microprocessor, digital controls, LCD display, level probe and electrovalve control.
PH	AA	"PH" Proportional pump driven by built in pH-meter and level control, supplied without pH probe.
RH	AR	"RH" Proportional pump driven by built in ORP-meter and level control, supplied without Redox probe.

CAPACITIES		
2001	0.26 GPH (1 l/h) against 290 PSI (20 bar)	Tubing: 1/4"
1802	0.53 GPH (2 l/h) against 261 PSI (18 bar)	Tubing: 1/4"
1004	1.06 GPH (4 l/h) against 145 PSI (10 bar)	Tubing: 1/4"
0706	1.59 GPH (6 l/h) against 102 PSI (7 bar)	Tubing: 1/4"
0408	2.11 GPH (8 l/h) against 58 PSI (4 bar)	Tubing: 1/4"
0216	4.23 GPH (16 l/h) against 29 PSI (2 bar)	Tubing: 3/8"
CAPACITIES self-venting metering pumps		
200,5	0.13 GPH (0,5 l/h) against 290 PSI (20 bar)	Tubing: 1/4"
1801	0.26 GPH (1 l/h) against 261 PSI (18 bar)	Tubing: 1/4"
102,8	0.62 GPH (2,8 l/h) against 145 PSI (10 bar)	Tubing: 1/4"
0704	1.06 GPH (4 l/h) against 102 PSI (7 bar)	Tubing: 1/4"
0406	1.59 GPH (6 l/h) against 58 PSI (4 bar)	Tubing: 1/4"
0211	2.90 GPH (11 l/h) against 29 PSI (2 bar)	Tubing: 3/8"

POWER SUPPLY	
03	115 VAC US plug
00	230 VAC Schuko plug
01	230 VAC without plug
04	24 VAC without plug
05	12 VDC *
07	24 VDC

* Confirm capacity availability at 12 VDC with EMEC staff.

Model H - MF 2001 V 00 00

LIQUID ENDS								
	Head	Orings	Valve		Diaphragm	Tubing		Viscosity
			Body	Balls		Delivery	Suction	Max CPS
V	Polypropylene	Viton®	Polypropylene	Ceramic	PTFE	Polyethylene	PVC	100
D	Polypropylene	Ethylene Propylene	Polypropylene	Ceramic	PTFE	Polyethylene	PVC	100
W	Polypropylene	Nytrile	Polypropylene	Ceramic	PTFE	Polyethylene	PVC	100
T	Polypropylene	Viton®+PTFE	Polypropylene	Ceramic	PTFE	Polyethylene	PVC	100
S	Polypropylene	Silicone	Polypropylene	Ceramic	PTFE	PVDF	PVDF	100
A	Acrylic	Viton®	Polypropylene	Ceramic	PTFE	Polyethylene	PVC	100
K	PVDF	Viton®	PVDF	Ceramic	PTFE	PVDF	PVDF	100
P	PVDF	EPDM	PVDF	Ceramic	PTFE	PVDF	PVDF	100
Z	SS	Viton®	SS	SS	PTFE	N/A	N/A	100
\$	Acrylic	Viton®	Polypropylene	SS+Hastelloy spring	PTFE	Polyethylene ²	PVC ²	8000 ¹

Viton® is a registered trademark of DuPont Dow Elastomers.

¹ Using high viscosity pump head "\$" pump output may results lower in some applications.
² Using high viscosity pump head "\$" tubing size will be: delivery 1/2", suction 16x22.



ISO 9001 certified

1365 Piper Road
Ashby, MA 01431

1-800-998-EMEC(3632)
1-978-386-0000

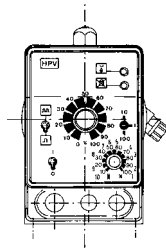
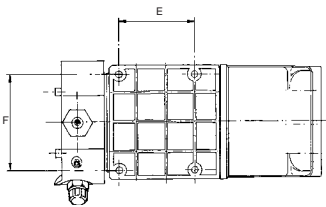
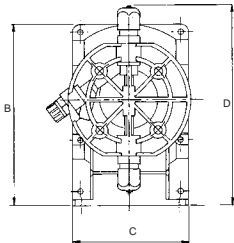
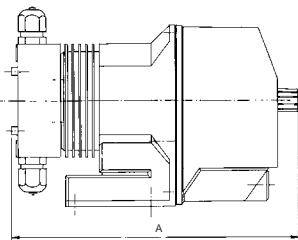
Fax 1-978-386-0002
www.emecpumps.com

Specifications subject to change without notice.
USA R1-02-06

"HMS DIGITAL" series Metering Pumps

Data Sheet

SPECIFICATIONS					
	Stroke speed		Stroke length minimum linear adjustment	Average Input Power at max speed	Shipping weight
	Min	Max			
	Strokes per Hour	Strokes per Minute			
2001	1	120	30%	19 Watt	9.02 Lbs (4.1 Kg)
1802	1	150			
1004	1	150			
0706	1	150			
0408	1	150			
0216	1	150			
<i>Self-venting models</i>					
200,5	1	120			
1801	1	150			
102,8	1	150			
0704	1	150			
0406	1	150			
0211	1	150			



DIMENSIONS		
	inch	mm
A	9.29	236
B	5.66	144
C	3.58	91
D	6.29	160
E	2.40	61
F	3.03	77

IP65 enclosure (NEMA4x)

The series "HMS DIGITAL" dosing pumps are manufactured in moulded glass filled Polypropylene housing to ensure protection against aggressive chemicals and tough environment.

OUTPUT INFORMATION								
	Gallons per Hour		Liters per Hour		mL/cc per Stroke		Maximum Injection Pressure	
	Min	Max	Min	Max	Min	Max		
2001	0.011	0.26	0.042	1	0.042	0.14	290.07 PSI	20 bar
1802	0.018	0.52	0.069	2	0.069	0.23	261.07 PSI	18 bar
1004	0.035	1.05	0.135	4	0.135	0.45	145.03 PSI	10 bar
0706	0.052	1.58	0.198	6	0.198	0.66	101.52 PSI	7 bar
0408	0.070	2.11	0.267	8	0.267	0.89	58.01 PSI	4 bar
0216	0.142	4.22	0.54	16	0.54	1.8	29.00 PSI	2 bar
OUTPUT INFORMATION <i>self-venting metering pumps</i>								
200,5	0.005	0.13	0.021	0.5	0.021	0.07	290.07 PSI	20 bar
1801	0.008	0.26	0.033	1	0.033	0.14	261.07 PSI	18 bar
102,8	0.024	0.74	0.093	2.8	0.093	0.31	145.03 PSI	10 bar
0704	0.034	1.06	0.132	4	0.132	0.44	101.52 PSI	7 bar
0406	0.053	1.59	0.201	6	0.201	0.67	58.01 PSI	4 bar
0211	0.096	2.91	0.366	11	0.366	1.22	29.00 PSI	2 bar